

TomTom BRIDGE & DIT: Exploring the electro mobility foundations of tomorrow

At DIT, the Deggendorf Institute of Technology, researchers explore and build the foundations of tomorrow's electro mobility. Involved in national and international projects and tightly connected to local companies such as the E-WALD GmbH, Germany's largest pure-electric fleet operator and system provider, scientists and engineers develop and test prototypes.

To host the software applications within the electric vehicles, DIT's experts were looking for a reliable, robust and performant hardware solution able to run continuously and throughout the often demanding weather conditions of the Bavarian Forest.



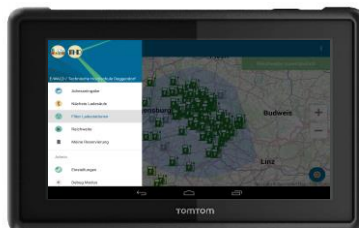
The solution

- The BRIDGE devices are installed standalone in the electric vehicles, no maintenance, no user interaction is required.
- The BRIDGE hosts prototypes such as the InCarApp, an Advanced Driver Assistance System which displays the current vehicle position on a map and predicts with high accuracy the remaining range. It provides various views of available charging stations and offers options to reserve them.
- In the background the BRIDGE devices are connected via Bluetooth to the CAN-Bus and continuously collect and send precise data to the DIT Data Analytics Platform for Electro Mobility a research framework for further data exploration and analysis.

The results

- Already successfully launched:
 - in 100 electric vehicles
 - distributed over an area of more than 7,000 KM².
 - a wide available infrastructure of 100 eCarSharing locations and 750 charging points, publicly accessible.

"TomTom BRIDGE E-WALD edition is an impressive device meeting our challenging purposes. It's the perfect bridge between research and application." – Katrin Juds, Project Coordinator E-WALD



Car rental

Website
www.th-deg.de
www.e-wald.eu

Headquarters
Germany

Regions of sale
✓ Germany

POWERED BY
TOMTOM
BRIDGE