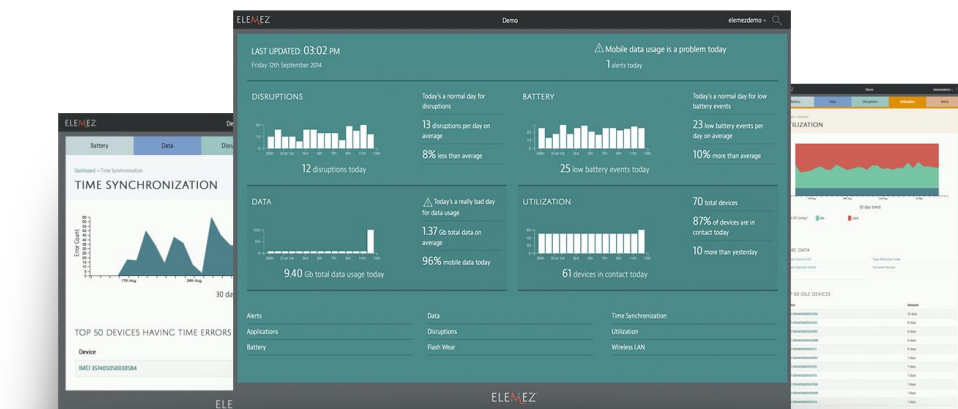


Improving Profits With Mobile Device Analytics

TomTom BRIDGE and B2M – Maximising worker productivity

B2M's Elemez™ mobile device analytics solution is designed to help you keep your BRIDGE devices where they belong – in the hands of the user. Elemez monitors your mobile devices to help you to identify trends that can have a negative effect on your business, such as increasing data usage or decreasing battery performance. Elemez can alert you in real time to key issues with your devices that could affect your business including device failure or unexpected device inactivity.

Managing mobile devices isn't easy. Some businesses use an MDM solution but for many businesses this isn't enough. If your devices are mission critical then you'll want to be able to spot and resolve potential problems before they have an impact on your business. As mobile device adoption has increased businesses need to be able to monitor and measure device performance and user behaviour in addition to standard MDM data. Businesses need to be able to identify issues that can affect a workers ability to do their job as device failure or performance problems can result in missed deadlines, poor customer experience, brand damage and lost profits.



The solution

Elemez from B2M enables businesses to monitor and measure the performance of their BRIDGE devices in real time providing visibility of potentially disruptive issues before they happen and providing instant real time alerts when critical problems are spotted.

Businesses use Elemez to monitor:

- Changes in average and individual mobile data usage
- Decreasing battery performance
- Daily/weekly/monthly device disruptions
- Device utilisation
- Application usage
- Critical failure alerts

The results

Businesses using Elemez to monitor their BRIDGE devices typically benefit from:

- Reduction in device disruptions maximising productivity
- Visibility of entire BRIDGE estate enabling rapid redeployment of dormant devices reducing need for buffer stock
- Decreased mobile data costs
- Reduced total cost of ownership of device investment

“B2M helped us to maximise the ROI of our investment in BRIDGE devices by providing visibility of under utilised devices so we could redeploy them to areas that needed them.”

Type



Software Provider

Website
www.b2msolutions.com

Headquarters
UK

Regions of sale
✓ Global

POWERED BY
TOMTOM
BRIDGE