



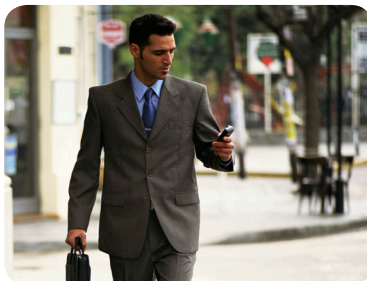
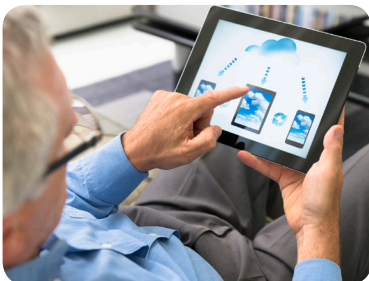
LBS Platform

Power your apps with the best location based content & services

TomTom LBS Platform is a cloud-based environment that allows developers to easily access TomTom's best-in-class map content and software services.

With this new Location Based Services (LBS) Platform, developers are equipped with the content and tools to create location-enabled applications for consumers, enterprises and Governments markets.

One-stop-Shop for the best of location intelligence



Why the TomTom LBS Platform?

The Freshest Maps

- TomTom coverage updated daily from multiple sources
- 200+ countries and territories covered
- Serving 3 billion+ people & 34 million kilometers globally

The most accurate real time traffic

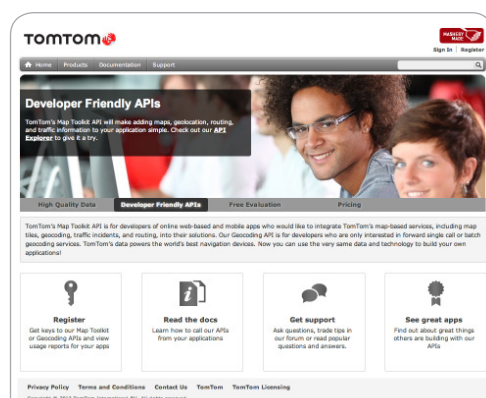
- Updates received constantly from GPS probe data
- Reporting vivid picture of traffic conditions as they evolve

Best in class Geocoding and routing

- Highly accurate geocoding results
- Coverage over enormous road network
- Automotive-grade routing

DEVELOPER PORTAL FEATURES

- Map Toolkit API - easy access to the best digital Maps, Best-In-Class routing, geocoding (forward and reverse) and real-time traffic
- Cloud-based platform - 24/7 easy access by developers anywhere in the world
- Possible integration of 3rd party data sources for the design of applications
- Reception of an API key for evaluation (upon registration)
- Clear, interactive documentation available to download
- Code snippets and SDKs
- Reporting and analytics to test and manage apps
- Transaction based pricing
- Comprehensive support and forum



<http://developer.tomtom.com>

Map Tiles

- Generate display map tiles
- Each image corresponds to a position on an established zoom level grid system used by the WMS-C standard
- Routing and Traffic tiles can be layered to create a compound display

Geocoding

- Free text search and reverse Geocoding API
- Free text search use our geocoding API to find an address, place or point of interest
- Use our Reverse Geocoding API to track locations from a pair of coordinates

Routing

- Point to point routing using automotive-grade routing algorithms
- Route calculation to provide the best route while avoiding traffic, or to plan upcoming journey for a certain time of day

Leverage TomTom HD Traffic for applications

- Include traffic incident and delay information for display on your map view
- Include detailed information such as: Type of delay Length of the delay, Significance, Distance
- Traffic information is updated every 2 minutes
- Along with a list of coordinate points for the route and a TomTom RouteKey

<http://developer.tomtom.com>

